

New York Threads

The Newsletter of
The New York Guild of Handweavers

Next meeting – Saturday, February 29, 2020. 12 Noon

Dosia Sanford

WARP PAINTING APPLICATION and TECHNIQUES

This presents and introduction to how warp painting can be used to achieve color interaction and abstraction in plain weave and beyond and includes discussion on different methods to achieve vastly different results--from the abstract to controlled design.

About Dosia Sanford

Dosia is a weaver, born in Vermont and currently living and working in Brooklyn, NY. She studied with master weaver Kate Smith at Marshfield School of Weaving (Vt.), and returns there to teach from time to time.



Dosia Sanford creates work on machines from the 18th and 19th century as a means to explore ideas of class, labor, technology, and our present and future understanding of how things are made. She promotes the idea that in our current time there is inherent power in knowing craft, as well as in recognizing past and present systems where highly skilled work was and is underpaid and underestimated when commodified.



NEW YORK THREADS - FEBRUARY 2020

MEETINGS

School of Visual Arts
133 West 21st Street, Room 602C
(between 6th and 7th Avenues)
New York, NY

Social Hour.....12 Noon

Bring your lunch!

Show & Tell.....12:30 p.m.

Bring your latest work. See what others have been doing!

Program.....1 p.m.

Speaker followed by a Q&A

Bring back your library books!



MEMBER NEWS

A Special Invitation from Jockey Hollow Weavers Guild

Jockey Hollow Weavers Guild of Mendham, N.J. is hosting Sheila O'Hara, Lower Lake, Calif., and invites NYGH members to benefit.

--April 1, 2020. The guild's monthly meeting program will feature O'Hara, who will present a lecture, Hand Jacquard Weaving-- One Thread at a Time.

--April 2 through 4: Workshop: Turning over a New Leaf -- or Petal!-- Multi Warp Twills. Spaces are available for this three-day workshop, where students will create an 8-shaft reversible scarf. (Both 8- and 16-shaft drafts will be covered.)

Where: Grace Lutheran Church, 65 E. Main St., Mendham, N.J.

Cost: The guild expects the total cost of the workshop to be \$250 or less and is dependent on the number of attendees. On registration, a non refundable deposit of \$100 is required, which will then be subtracted from the final cost.

Details: Students will bring pre-warped loom to class. Warping instructions will be sent out at sign up.

About Sheila O'Hara: A graduate of the California College of Arts & Crafts, has pursued a career in textiles, she has developed a unique two-faced twill weave structure with a lush wool surface texture. A 16 harness AVL compudobby loom enables her to construct these pieces from four separate sets of warps woven in one layer. This technique becomes a palette.



To register for the workshop, contact: [Eileen Scally](#)

Request for help with Baby Wolf loom

[Rodd Sovar](#) has a Schacht Baby Wolf 8 shaft/10 treadle floor loom and is looking for someone in the NYC area that could do a tune up on his loom... oil/check for square/etc. Contact him via [email](#) if you can help--either yourself or by pointing him in the right direction.

Terry's Advancing Twill Draft

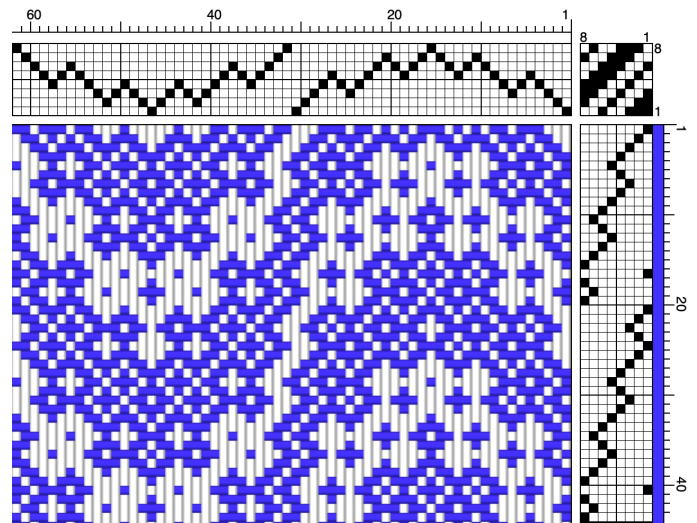
When Terry Henley shared his beautiful silk scarf during Show-and-Tell at the January guild meeting, members oohed and aahed--and some asked for the draft. And Terry has graciously shared his work. Thank you, Terry!

Terry's creation is an 8-shaft pattern with a 62-thread repeat and a treadling sequence of 20. (Note: There are two treadling sequences shown in the draft below to show more of the pattern.)

"All of it was 20/2 silk," says Terry. "I was trying to use up a lot of small amounts of silk in the warp so it had a lot of colors. The weft was a solid color so the pattern would show up."

Terry's advancing point twill draft is unique and interesting, but his use of color in the design turns an interesting draft in to a spectacular woven scarf. This pattern would make a beautiful scarf using two colors, but it is Terry's use of color that significantly enhances his design. And those colors make it look much more intricate--and difficult to weave than it is.

Now, who will be the first to use this draft and bring it to Show-and-Tell?



What is an advancing twill?

Advancing twills are weaves based on systematic, progressing changes in threading order--usually based on a skipped shaft, (e.g., 12345, 23456, etc.)

Terry's draft is more complicated as the threading combines a point twill (e.g., 1234321) with an advancing twill (as in the above draft, 12345-4-34567).

MEMBER NEWS

Pantone's Color Palette for Autumn/Winter 2020/2021

According to Pantone Color Institute experts, "colors for Autumn/Winter 2020/2021 New York reflect our interest in desirable seasonal classics imbued with personality. Colors whose timelessness and versatility convey a level of functionality, and at the same time lend themselves to unique color statements that stand out. These colors encourage creativity as well as pragmatism, reflecting the changing mindset of today's consumer, who prioritizes value and longevity over color choices that are here today and gone tomorrow." See the colors online by [clicking here](#).



PANTONE 16-1350
Amberglow

A radiant autumnal orange, Amberglow promotes self-confidence and creative self-expression.



PANTONE 19-1662
Samba

A voluptuous sultry red, Samba introduces an upbeat energy.



PANTONE 16-1328
Sandstone

Tied to nature, earthy Sandstone speaks of the rustic outdoors.



PANTONE 19-4052
Classic Blue

A boundless blue hue, Classic Blue is evocative of the vast and infinite evening sky opening us up to a world of possibilities.



PANTONE 13-0648
Green Sheen

Optimistically rebellious, Green Sheen is a bold acidic yellow-green shade that will always stand out.



PANTONE 16-1511
Rose Tan

A gentle dusky pink, Rose Tan imparts a sense of composure.



PANTONE 18-5338
Ultramarine Green

Ultramarine Green, a deep cooling blue-green, exudes self-assurance and poise.



PANTONE 19-1337
Fired Brick

Strong and sturdy, Fired Brick adds gravitas.



PANTONE 12-0713
Almond Oil

Tasteful Almond Oil is a smooth and subtle off-white shade.



PANTONE 19-3940
Blue Depths

Blue Depths implies an air of mystery and the unknown.



PANTONE 16-3916
Sleet

Highlighting our desire for longevity, Sleet is a timeless gray that is dependable, solid and everlasting.



PANTONE 19-0622
Military Olive

Military Olive is a strong and stalwart foundational green tone.



PANTONE 14-1220
Peach Nougat

Nurturing Peach Nougat embraces with its inviting warmth.



PANTONE 19-2428
Magenta Purple

A hypnotic purple shade, Magenta Purple intrigues and mesmerizes.

The Autumn/Winter 2020/2021 Classics: The core hues can stand alone as singular color statements or as the foundation for other colorways.



PANTONE 12-0713
Almond Oil

Tasteful Almond Oil is a smooth and subtle off-white shade.



PANTONE 19-3940
Blue Depths

Blue Depths implies an air of mystery and the unknown.



PANTONE 16-3916
Sleet

Highlighting our desire for longevity, Sleet is a timeless gray that is dependable, solid and everlasting.



PANTONE 19-0622
Military Olive

Military Olive is a strong and stalwart foundational green tone.

MUSEUMS and EXHIBITIONS

THE WORLD OF ANNA SUI

Anna Sui reinvented pop culture fashion with her signature rock-and-roll romantic label in the 1990s and has remained a design icon ever since.

Through February 23

Museum of Art and Design (MAD)
2 Columbus Circle, NYC



TAKING A THREAD FOR A WALK

This show includes Anni Albers's tapestries, gouaches, screenprints and drapery material from the 1920s to the 1980s, a wall hanging by Gunta Stölzl, and two sculptures by Sheila Hicks.

Through April 19

[MOMA](#)

11 West 53 Street, NYC



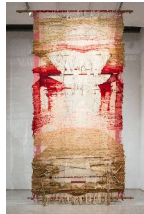
FEBRUARY LIGHT: JOSEP GRAU-GARRIGA

Grau-Garriga explored the beauty of the backside of the tapestry, the messy underbelly of the work that is usually concealed. His work led to the founding of the Catalan School of Tapestry

Through February 29

[Salon 94 Bowery](#)

243 Bowery, NYC



POWER MODE: THE FORCE OF FASHION

Explores the role fashion plays in establishing, reinforcing, and challenging power dynamics within society

Through May 9

[Museum at FIT](#)

227 West 27th Street, NYC



BROOKLYN QUILTS!

[The Brooklyn Quilters Guild](#)'s biennial show with more than 200 quilts on display.

March 21-22, 2020

Industry City, Factory Floor, Building #1
Brooklyn, NY



NATURE BY DESIGN: COCHINEAL

Exploration of the enduring legacy of cochineal and its innovative use among contemporary designers from across the Americas through a variety of medium.

Through September 7

[Cooper-Hewitt](#)

2 East 91st Street, NYC



FRANK LLOYD WRIGHT TEXTILES: THE TALIESIN LINE, 1955-60

This installation features Schumacher's *Taliesin Line of Decorative Fabrics and Wallpapers*, and fabric samples from Wright's designs.

Through April 5, 2020

[The Met Fifth Avenue](#)

1000 Fifth Avenue, NYC



BORO TEXTILES: SUSTAINABLE AESTHETICS

For the first time in the U.S., this exhibition assembles over 50 pieces from the personal collection of folklorist and cultural anthropologist Chuzaburo Tanaka (1933–2016).

March 14 through June 14

[Japan Society](#)

333 East 47th Street, NYC



BALLERINA: FASHION'S MODERN MUSE

Illustrates the rise and subsequent influence of classical ballet and ballerinas on high fashion from the early 1930s to the late 1970s.

Through April 18, 2020

[Museum at FIT](#)

227 West 27th Street, NYC



MAKING KNOWING: CRAFT in ART, 1950-2019

Explores materials, methods, and strategies of craft used over the past seven decades through more than 80 works by more than 60 visual artists.

Through January 2021

[Whitney Museum](#)

99 Gansevoort St., NYC



MUSEUMS and EXHIBITIONS: Beyond the Boroughs

SUIT YOURSELF: 75 YEARS OF POWERFUL STYLE

Fox Historic Costume Collection showcases the many revolving styles of women's suits from elegant ensembles through contemporary styles from celebrated designers.

Through March 13

Leonard Pearlstein Gallery

[Westphal College of Media Arts and Design, Drexel University](#)

Philadelphia, Pa.



KATHARINE COBEY: A DIFFERENT VOICE

Showcase of her knitted fiber sculptures of fibers, metal wires, and plastics.

Through April 12

[Farnsworth Art Museums](#)

Rockland, Maine



THE ART AND DESIGN OF SPIDER SILK

Explores the capabilities of spiders and how their silk has inspired and enchanted engineers, artists, and designers.

Through April 19, 2020

[Rhode Island School of Design Museum](#)

224 Benefit St., Providence, RI



EXPLORATIONS IN FELT

Exhibition features 29 works created by 25 artists from around the world.

Through April 19

[Hunterdon Art Museum](#)

Clinton, NJ



MIDNIGHT MASS

A monumental site-specific installation of semi-translucent silk panels suspended on wires in the atrium plenum by Amie Potsic.

Through April 25

[Delaware Center for Contemporary Art](#)

Wilmington, Del.



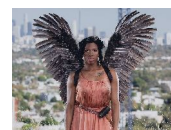
WOMEN TAKE THE FLOOR--BEYOND THE LOOM: FIBER AS SCULPTURE/SUBVERSIVE THREADS

Gallery highlights early pioneers of fiber art--Lenore Tawney, Ruth Asawa, Sheil Hicks, and Olga de Amaral--who radically redefined textiles in the 1960s and 1970s.

Through May 3, 2021

[Museum of Fine Arts](#)

Boston, Mass.



OFF THE WALL: AMERICAN ART TO WEAR

Exhibition showcases a generation of mixed-media artists who pioneered a new art form designed around the body. Features unique works by more than 75 artists.

Through May 17

[Philadelphia Museum of Art](#)

Philadelphia, Pa.



STILL COLORFUL AFTER ALL THESE YEARS

Exhibition focuses on colors derived from natural dyestuffs and mordants from plants, trees, insects and natural fibers.

Through May 20

[National Museum of the American Coverlet](#)

Bedford, Pa.



DELIGHT IN DISCOVERY: THE GLOBAL COLLECTIONS OF LLOYD COTSEN

This exhibition brings together global treasures gathered by Lloyd Cotsen, who assembled thousands of textile fragments, garments, and other artworks over his lifetime.

February 22 through July 5

[The Textile Museum at GWU](#)



COLLECTING ACROSS CULTURES: JAPANESE TEXTILES in the WEST

Exhibition explores Japan's rich textile traditions as well as the legacy of Western collectors, including many American collectors such as architect Frank Lloyd Wright.

Through Fall 2020

[Allentown Art Museum of the Lehigh Valley](#)

Allentown, Pa.



NEW and NOTEWORTHY

CONFERENCES

April 30-May 1, 2020

26th Annual Weaving History Conference

Thousand Islands Arts Center
Clayton, NY

July 24-30, 2020

Handweavers Guild of America's 2020 Convergence

Knoxville Convention Center
Knoxville, Tenn.

July 19 - 22, 2020

Complex Weavers Seminars 2020

Hilton Knoxville
Knoxville, Tenn.

June 24-27, 2021

MidAtlantic Fiber Association's 2021 Conference

Millersville University, Millersville, Pa.

This is an all-volunteer event: Can you help? Email Conference Chair Margaret Briggs, who can help match you with what you like to do.

Mini-Inkle Loom: Print it Yourself!

Full details to print [here](#).



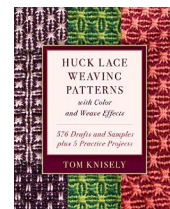
BOOKS OF INTEREST

Huck Lace Weaving Patterns with Color and Weave Effects: 576 Drafts Plus 5 Practice Projects

by Tom Knisely

"This is not a book for beginners," says *Handwoven* magazine reviewer Sara Lamb. No weaving basics here. This book is "a study and a systematic cataloging of the pattern possibilities that exist within a relatively small grouping of warp ends and weft picks."

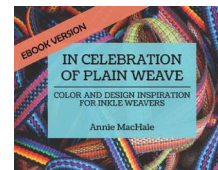
The four major sections of the book are based on color properties and include 144 swatches with drafts.



In Celebration of Plain Weave: Color and Design Inspiration for Inkle Weavers

by Annie MacHale

This is a beautiful and useful book for inkle weavers who want to understand color and proportion in their woven bands, says *Handwoven* magazine reviewer Susan E. Horton.



The Golden Thread: How Fabric Changed History

by Kassia St Clair

A Sunday Times (UK) Book of the Year Shortlisted, Society of Authors' Somerset Maugham Award, and a BBC Radio 4 Book of the Week. According to Goodreads: "The best-selling author of *The Secret Lives of Color* returns with this rollicking narrative of the 30,000-year history of fabric, briskly told through thirteen charismatic episodes."



***A Single Thread*, a novel**

by Tracy Chevalier

Chevalier "has such a sure eye for detail" that she can make even embroidery fascinating, says Kate Saunders in *The Sunday Times* (U.K.). In this story set between WWI and WWII, Winchester Cathedral the needleworkers inspire a newcomer.



RESOURCES

2019-2020 GUILD CALENDAR

February 29, 2020
"Warp Painting Application and Techniques"
Dosia Sanford

March 28, 2020
"Split Shed Tied Beiderwand"
Deborah Silver

March 29, 2020 (Sunday)
Workshop: "Split Shed Tied Beiderwand"
Deborah Silver
10 a.m. – 4 p.m.

April, 25, 2020
"Texture in the Art of Anni and Josef Albers"
Fritz Horstman

OFFICERS, BOARD MEMBERS, and COMMITTEE MEMBERS

Questions or information to share?

Contact us at NYGH.info@gmail.com

President: Carol Steuer

Vice President: Carie Kramer

Secretary: Gigi Mathews

Treasurer: Vicki Aspenberg

Newsletter Editor: Charlene Marietti

Membership: Terry Henley

Membership questions: NYGH.membership@gmail.com

Programs: Gail Gondek

Publicity: Halyna Shepko

Librarian: Carie Kramer

SOCIAL MEDIA

[Facebook](#)

[YouTube](#)

[Instagram](#)

[Ravelry](#)

[Pinterest](#)

[Weavolution](#)

MAILING ADDRESS

The New York Guild of Handweavers
P.O. Box 1507
Chelsea Station
New York, NY 10113-1507

WEAVING SUPPLIES AND CLASSES IN NYC

Manhattan

[Loop of the Loom](#)

227 E. 87th St., #E.
NYC, 10128

[Textile Arts Center](#)

26 W. 8th St.
NYC, 10011

[School Products Yarn](#)

13 E. 37th St, 6th Floor
NYC, 10016

Brooklyn

[Loop of the Loom](#)

197 Plymouth St.
Brooklyn, 11201

[Textile Arts Center](#)

505 Carroll St.
Brooklyn. 11515

[Woolyn](#)

105 Atlantic Ave.
Brooklyn, 11201

NEED SUPPLIES?

Halcyon and The Woolery reward guilds 5% of every purchase made by members. To take advantage:

Sign up for Guild Rewards at [Halcyon Yarn](#).

Use this direct link to access the automated reward program when purchasing at [The Woolery](#)

(note: new website link)